

#4 Tuesday May 2nd



SUPPORTED EMPLOYMENT

Facilitated by: Gail Finnson, CCDP
Ridge Meadows Assn. for Community Living

The customized approach is a different process very different than how you, as a parent would have done your job search. Come check it out; you WILL be encouraged.

&

CUSTOMIZED EMPLOYMENT

Facilitated by: Karoline deVries, CCDP
Doug WorkBC
Employment Services Centre

Customized employment is a personalized process based on three phase's: Discovery, Placement planning, and negotiation of employment relationships. It bridges the gap between the job candidate, and employer. It utilizes the clients strengths to skillfully carve positions based on the abilities of our clients.

Work BC can also provide assistance for Job Start supports and is readily available to work collaboratively with The Bridge Employment Services program to provide additional wrap around supports.

Jobs

INFORMATION & REGISTRATION

Session 1 - Tuesday April 11th

Community Living British Columbia (CLBC)

ELIGIBILITY & HOW TO APPLY

Session 2 - Tuesday April 18th

Ministry of Social Development & Social Innovation (MSDSI)

A LOOK AT PWD, RDSP, TRANSIT PASSES AND HEALTH BENEFITS &

Soheila Ghodsieh, Financial Consultant

MAXIMIZING YOUR RDSP

Session 3 - Tuesday April 25th

A Conversation Panel

CREATING A SOCIAL NETWORK FACE TO FACE & HAVING FUN

Session 4 - Tuesday May 2nd

Ridge Meadows Association for Community Living (Bridge Employment)

SUPPORTED EMPLOYMENT &

Work BC

CUSTOMIZED EMPLOYMENT

For **information** contact: Elena Di Giovanni SD42 Learning Services
edigiovanni@sd42.ca

To **register** contact: Kerri Wilson SD42 Learning Services
kerri_wilson@sd42.ca

SPACES ARE LIMITED • REGISTER EARLY!



Life After School Transition Committee

L.A.S.T.

TRANSITION TUESDAYS

SPEAKER SERIES

Thomas Haney Secondary School

23000 - 116th Ave. Maple Ridge

4 SESSIONS - 4 TOPICS

April 11th April 18th

April 25th May 2nd

7:00pm - 8:30pm

PLANNING
POSITIVE
FUTURES



SUPPORT • MONEY • CONNECTIONS • JOBS

#1 Tuesday April 11th



ELIGIBILITY & HOW TO APPLY

Facilitated by: Carlos Canizales & Laura Kosciecha, CLBC Facilitators

Community Living British Columbia (CLBC)

This information session is set up to help families understand the process to determine eligibility for CLBC support and services. We will be discussing questions such as:

- ↳ What is CLBC?
- ↳ What does CLBC do?
- ↳ Who is eligible for CLBC?
- ↳ How do I apply?
- ↳ What types of supports and services does CLBC provide?
- ↳ How does CLBC confirm eligibility and what is the criteria?
- ↳ What documents are required for eligibility for a person with a development disability?
- ↳ What is the Personalized Supports initiative? (PSI)
- ↳ How do I apply for CLBC supports for my child who is not yet an adult?
- ↳ How long will it take to find out if my family member is eligible for CLBC adult services?
- ↳ How will I know the result of the eligibility decision?
- ↳ What happens after eligibility has been confirmed?
- ↳ Can I apply for CLBC outside BC?



Support

#2 Tuesday April 18th



A LOOK AT PWD, RDSP, TRANSIT PASSES AND HEALTH BENEFITS

Facilitated by: Connelle Styles, Asst. Supervisor MSDSI Maple Ridge/Mission

Ministry of Social Development & Social Innovation

This session will provide information on how to apply for financial supports that may be available to young adults with disabilities. Early planning and insight into the application processes ensures a smooth transition, including applying for PWD before their 18th birthday.

&

MAXIMIZING YOUR RDSP

Facilitated by: Soheila Ghodsieh, Financial Consultant (Former CLBC Manager)

- ↳ Soheila will offer her expertise in how to utilize the Registered Disability Savings Plan to its maximum advantage.
- ↳ For over twenty years Soheila has worked and supported families and individuals with diverse abilities as a Manager of Community Planning and Development/Quality Insurance Manager with CLBC and now as a private financial consultant.
- ↳ With the depth of her experience she understands that one of the top 3 important facts and worries for an individual and their family is financial stability, planning for now and for retirement.



Money

#3 Tuesday April 25th



CREATING A SOCIAL NETWORK: FACE TO FACE AND HAVING FUN

This is an audience participation session.

Engaging dialogue with community experts.

Join us for an exciting evening as we explore the question: Creating Social Networks... what's out there and how do we access it?

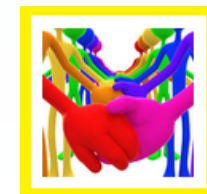
We'll discuss community resources, strategies for and the importance of:

- ↳ skills building
- ↳ networking at all ages
- ↳ encouraging personal stories to help participants seek the right resources for their families

Panel will include:

- ↳ SELF ADVOCATES
- ↳ PARENTS
- ↳ REPRESENTATIVE FOR CHILDREN & YOUTH WITH SPECIALS NEEDS
- ↳ RECREATION SPECIALIST
- ↳ SERVICE PROVIDERS
- ↳ BEHAVIOUR CONSULTANT

These knowledgeable individuals will share their experiences and offer strategies for creating successful and lasting social circles.



Connections